

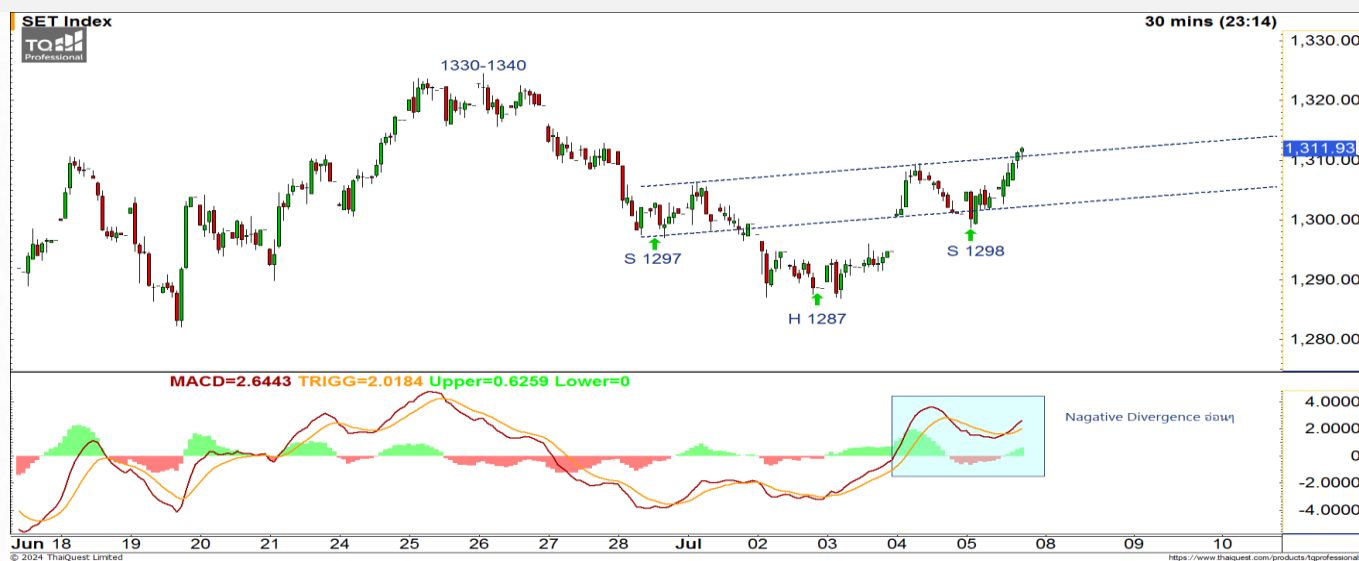
WORLD OF TECHNICAL

Technical Investment Strategy



July 8, 2024

SET INDEX



Support: 1,306-1,307

Resistance: 1,315-1,320

Analysis:

On July 5, foreigners were net buyers at B1,688m, covering net selling of B1,369m on July 4, resulting in MTD net selling of B845m (July 1-5).

SET Index today is expected around 1,306-1,320 pts. In a 30-minute chart, it was stuck under 1,315 pts resistance range as RSI showed a negative divergence. This morning, it may open down but not fall below 1,306 pts, taking a rest. As long as it stands above the gap around 1,296-1,300 pts, it is expected to make a double bottom and then surpass EMA25 of 1,315-1,317 pts. Yet, it may fall below 1,270 pts and fall further.

Conclusion:

Buy at 1,288 pts or 1,278 pts and wait for a rebound. It may enter an uptrend if it stands above 1,330 pts. If it falls below 1,270 pts, wait and see.

Top 5 Most Active Value (block trade)

Stock	Support	Resistance	Recommend
1 KBANK	123.00	135.00	KBANK surpassed the upper frame of the symmetrical triangle, rising to B130.50.
2 DELTA	79.75	88.00	DELTA made a bullish breakout from the ascending triangle, widening upside.
3 PTTEP	149.50	155.50	PTTEP made a higher low and was swinging sideways.
4 IVL	18.70	20.70	IVL was rebounding from the support zone with a hammer candlestick.
5 BBL	130.00	135.00	BBL was rebounding. MACD showed a bullish divergence.

Source: ASPS Research

WORLD OF TECHNICAL

Technical Investment Strategy



RBF

Technical Signal: BUY



Analysis:

RBF was in the downtrend, but it made a higher low with less negative divergence and thinner volume. It made a bullish breakout from EMA10 at the close. Accumulate. Short-term target is EMA75 of B10.20.

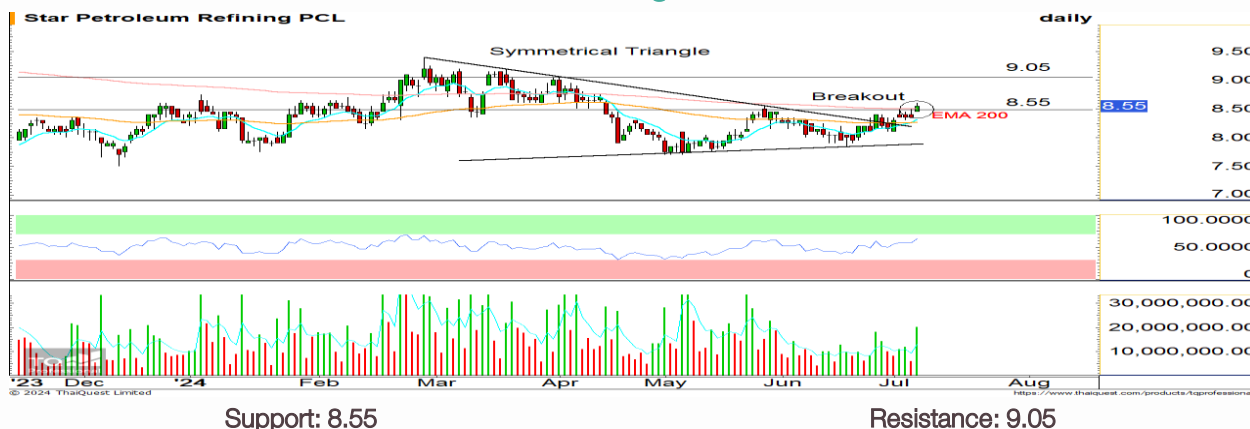
RSI was rising to 50, entering the bullish zone.

Recommendation:

Follow buy at B9.25, taking profit at B10.20 and cutting loss at B9.00.

SPRC

Technical Signal: BUY



Analysis:

SPRC was taking a rest in the symmetrical triangle. It made a breakaway gap above EMA200 of B8.55, widening upside. Accumulate. It may rise to B9.05.

RSI was over 50, entering the bullish zone.

Recommendation:

Buy at B8.55, taking profit at B9.05 and cutting loss at B8.30.

WORLD OF TECHNICAL

Technical Investment Strategy



ASPS Technical Portfolio

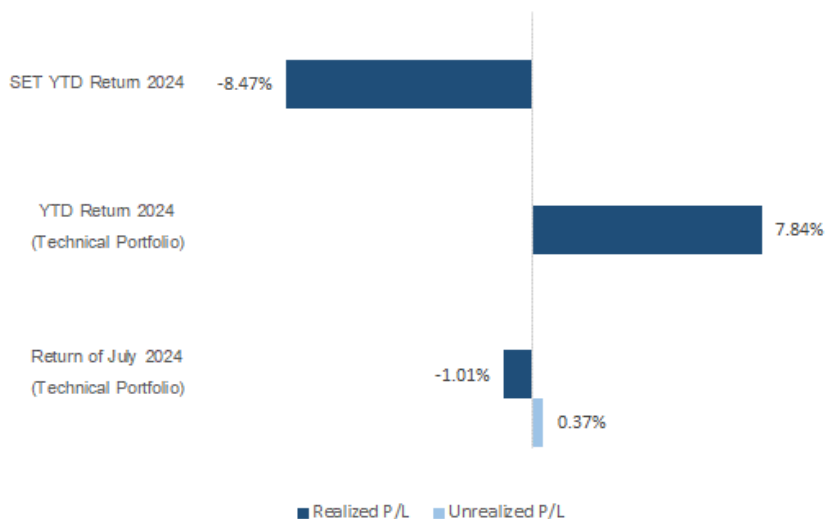
Date	Stock	Target Price	Cut Loss/	Price Start	Price Close	Return %	Weight	Action
TECHNICAL BUY SIGNAL								
8-Jul-24	RBF	10.20	9.00	N.A.	9.25	N.A.	7.50%	Follow buy at B9.25
8-Jul-24	SPRC	9.05	8.30	N.A.	8.55	N.A.	7.50%	Open at B8.55
5-Jul-24	CPAXT	30.00	27.00	27.75	28.00	0.90%	7.50%	Opened at B27.75
5-Jul-24	AP	8.80	7.90	8.20	8.30	1.22%	7.50%	Opened at B8.20
5-Jul-24	AAV	2.20	1.97	2.04	2.04	0.00%	7.50%	Opened at B2.04
5-Jul-24	TU	15.80	14.30	14.80	14.90	0.68%	7.50%	Opened at B14.80
4-Jul-24	HANA	51.00	45.50	47.50	48.50	2.11%	7.50%	Opened at B47.50
4-Jul-24	SPALI	19.50	17.60	18.20	17.60	-3.30%	7.50%	Cut loss
4-Jul-24	CPN	57.25	52.75	N.A.	56.00	N.A.	7.50%	Open at B54.25
4-Jul-24	SYNEX	13.90	12.20	N.A.	13.50	N.A.	7.50%	Open at B12.60
3-Jul-24	BEM	8.10	7.40	7.60	7.65	0.66%	7.50%	Closed*
3-Jul-24	SIS	27.25	24.40	N.A.	27.50	N.A.	7.50%	Closed*
3-Jul-24	BTG	22.80	20.80	N.A.	22.50	N.A.	7.50%	Closed*
3-Jul-24	CBG	72.00	66.50	N.A.	68.50	N.A.	7.50%	Closed*
TECHNICAL SELL SIGNAL								

* Note: If the prices do not reach the targets within three days, we close the position to reduce risk.

** Strategy change: Changing buying points or selling points.

Source: ASPS Research

Accumulated Return of Technical Portfolio



Source: ASPS Research

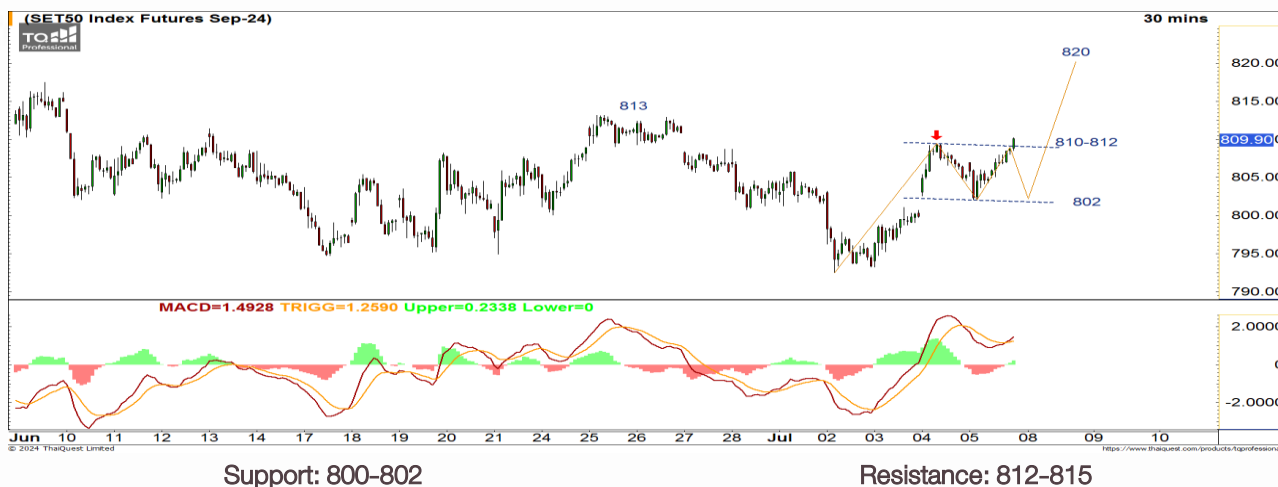
WORLD OF TECHNICAL

Technical Investment Strategy



SET50 INDEX FUTURES

S50U24 : LONG



Analysis:

On July 5, foreigners opened 6,720 net long contracts (third day), resulting in 53,946 MTD net long contracts (July 1-5).

This morning S50U24 is stuck under 812 pts resistance range, and MACD showed a negative divergence (30-minute chart), but it should not fall below 802 pts. Today it is expected around 802-815 pts. Then, it is expected to rebound with a double bottom and test 820-830 pts. Today and this week, RSI shows show positive divergence, and a golden cross is expected.

Recommendation:

Hold a long position of S50U24 at 795 pts or open a follow long position at 805 pts. Take profit at 812-820 pts or 830 pts and cut loss below 790 pts.

SINGLE STOCK FUTURES

ADVANC24: LONG



Analysis:

ADVANC made a bullish breakout from the neckline of the inverse head and shoulders, signaling a reversal. RSI was rising to 50, entering the bullish zone.

Recommendation:

Open a long position of ADVANC24 at B207.50, taking profit at B220 and cutting loss -B2 below the cost.

WORLD OF TECHNICAL

Technical Investment Strategy



GOLD ONLINE FUTURES

GOU24 : LONG



Analysis:

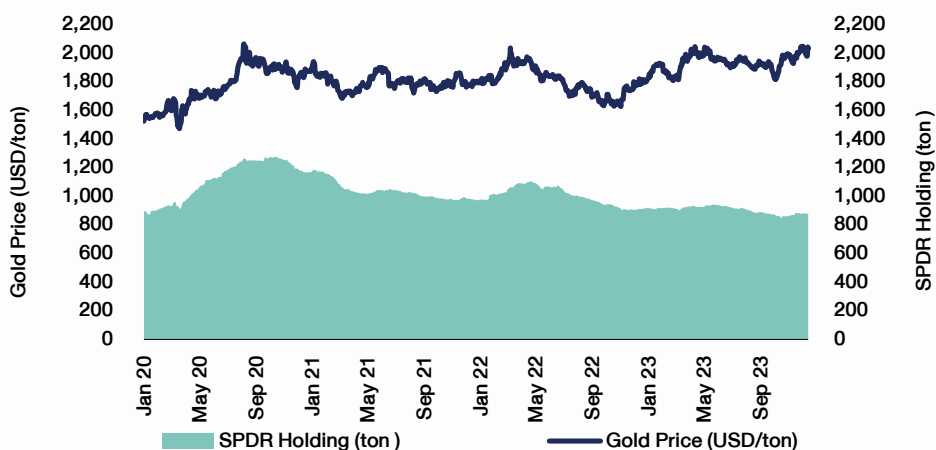
Reported last Friday night, U.S. nonfarm payrolls in June rose 206,000, higher than 191,000 expected but down from 218,000 in May. Unemployment rate rose to 4.1% (initially expected to stay flat at 4%). Weak labor market signals higher chance of an interest rate cut by 0.25% in September. Thus, gold price made a one-month high.

In a 30-minute chart, gold price rose in the bullish pennant to US\$2,390. It is expected to stay stuck at US\$2,395-2,410 resistance range, having limited upside. This week or this month, if it cannot surpass US\$2,410-2,450, it may undergo correction after it passed the high of US\$2,450 (Wave 5) on May 20.

Recommendation:

Open a long position at US\$2,370-2,380 (not opened yet last Friday).

SPDR Gold Shares



Source: ASPS Research

WORLD OF TECHNICAL

Technical Investment Strategy



Investor Positions

SET50 Futures Long(Short) Position : Contract				Accumulated Long(Short)		
	Long	Short	Net	2 Days	1 Weeks	1 Months
Institution	27,707	27,431	276	876	-4,347	-696
Foreign	66,340	59,620	6,720	28,461	53,946	23,963
Retail	77,747	84,743	-6,996	-29,337	-49,599	-23,267

Single Stock Futures Long(Short) Position : Contract				Accumulated Long(Short)		
	Long	Short	Net	2 Days	1 Weeks	1 Months
Institution	36,506	41,980	-5,474	7,835	-5,306	-29,389
Foreign	2,308	3,210	-902	-3,276	-4,561	29,433
Retail	46,683	40,307	6,376	-4,559	9,867	-44

Source: ASPS Research (MTD Jun 6 – Jul 5, 2024)

SET50 Index Trading

UNDERLYING	Close	Chg	%Chg	Trading Conclusion		
SET50	814.04	5.42	0.67%	5/7/24		
Symbol	Settle	Chg	%Chg	Vol.	OI	OI Chg
S50N24	814.00	5.4	0.7%	52	488	75
S50Q24	812.00	4.3	0.5%	17	199	64
S50U24	809.90	4.8	0.6%	151,604	609,684	4,836
S50Z24	810.90	4.5	0.6%	14,976	55,446	2,457
S50H25	807.60	4.3	0.5%	3,262	23,703	1,712
S50M25	802.90	4.1	0.5%	1,883	5,514	0

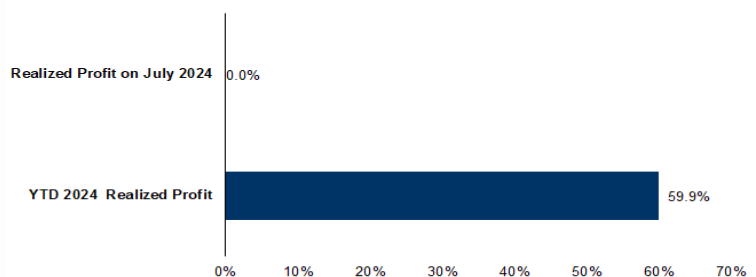
Source: ASPS Research

Top 20 Most Active Volume

Future	Settle Price	Basis	Vol	OI	OI Change	Leverage	Resistance	Support
1 BANPU24	5.11	7.4	7,420	27,984	2,258		5.10	4.93
2 VGIU24	1.62	1.77	5,461	17,417	4,350		1.60	1.54
3 TTBU24	1.72	4.4	5,326	23,841	-	940	7.88	1.73
4 TUU24	14.78	6	3,768	5,944	449	13.64	14.78	14.46
5 APU24	8.36	3.62	2,273	17,994	1,251	6.61	8.36	7.85
6 WHAU24	4.99	17	2,095	15,882	-	483	6.92	4.99
7 BTSU24	4.48	9.15	1,566	14,591	1,506	14.76	4.49	4.28
8 TRUEU24	8.81	5.2	1,556	25,051	1,495	16.03	8.96	8.80
9 AWCU24	3.64	210	1,533	13,731	-	44	13.97	3.66
10 COM7U24	20.45	20.9	1,176	8,174	-	208	3.97	19.89
11 LHU24	5.86	20.6	1,083	40,330	7	16.71	5.86	5.67
12 JASU24X	2.88	247	1,028	60,019	27	18.21	2.88	2.81
13 BDMSU24	26.67	40	1,009	9,909	-	1	11.98	27.77
14 PRMU24	8.24	56.5	1,001	9,524	993	11.10	8.24	7.91
15 IVLU24	19.27	0.47	912	8,962	363	4.05	19.29	18.70
16 JMTU24	13.13	9.25	865	7,518	-	115	6.19	13.24
17 CPFU24	23.5	21.2	858	6,000	843	6.38	23.56	23.43
18 KCEU24	45.7	26.75	649	1,508	-	329	17.05	44.80
19 TOPU24	55.25	39.5	597	1,494	16	8.12	55.54	54.70
20 KTBU24	17.65	13.7	571	38,804	24	15.81	17.92	17.56

Source: ASPS Research

Tracking Performance



Note: Return is calculated by comparing opening price on the recommendation date as cost with the accumulated return at the latest closing price on the day we recommend closing the position or cutting loss.

Source: ASPS Research

RESEARCH DIVISION

ASIA PLUS SECURITIES

Therdsak Thaveeteeratham, CISA

Fundamental Investment Analyst on Capital Market,

Technical Investment Analyst

License No. : 004132

Prasit Rattanakijkamol, CFA, CISA

Fundamental Investment Analyst on Capital Market,

Technical Investment Analyst

License No. : 025917

Nuanpun Noiruchchukorn

Fundamental Investment Analyst on Capital Market,

Technical Investment Analyst

License No. : 019994

Pawarisa Lertkijhunanont

Fundamental Investment Analyst on Capital Market,

Technical Investment Analyst

License No. : 009579

Thanathorn Kerdnate

Fundamental Investment Analyst on Capital Market,

Technical Investment Analyst

License No. : 048495

CORPORATE GOVERNANCE

AAAAA										AAAA										AAA										AA																																																												
AAV	CMBT	INTUCH	PG	SNIP	TSC	LIT	2S	SKN	AMANA	SMIT	UBA	AMC	SOLAR	UMS	ASAP	STECH	WARRIX	AE	CPN	KASET	PLANET	SPALI	TWPC	AF	CPW	KBANK	PLAT	SPC	UBE	AMR	STANLY	APURE	SUPER	BIOTEC	TEAM	CCET	TFI	CHARAN	TKC	CHAYO	TPA	AJ	DEMCO	KGEN	PR9	SSP	UV	AKP	DIMET	KGI	PREB	SSSC	VCOM	PRG	SST	VGI	AMANA	DRT	KSL	PRINC	STA	VIH	PRM	STGT	WACOAL	WHA	FSX	GLOBAL	GREEN	ICN	IHL	ITC	J	JMART	J	DMT	EKH	DEXON	CV	CAZ	CBG	BYD	BTG	BLAND	ASW	AMC	ALT	ADB	ACE	DECLARED
ACV	CIVIL	IRC	PJWB	SNP	TSST	MOONG	AIE	SSP	ALUCON	SST	YONG	AMR	STANLY	APURE	SUPER	BIOTEC	TEAM	CCET	TFI	CHARAN	TKC	CHAYO	TPA	AJ	DEMCO	KGEN	PR9	SSP	UV	AKP	DIMET	KGI	PREB	SSSC	VCOM	PRG	SST	VGI	AMANA	DRT	KSL	PRINC	STA	VIH	PRM	STGT	WACOAL	WHA	FSX	GLOBAL	GREEN	ICN	IHL	ITC	J	JMART	J	DMT	EKH	DEXON	CV	CAZ	CBG	BYD	BTG	BLAND	ASW	AMC	ALT	ADB	ACE	DECLARED																		
ACG	CK	IRPC	PLANB	SO	TSST	NCL	AIE	SSP	ALUCON	SST	YONG	AMR	STANLY	APURE	SUPER	BIOTEC	TEAM	CCET	TFI	CHARAN	TKC	CHAYO	TPA	AJ	DEMCO	KGEN	PR9	SSP	UV	AKP	DIMET	KGI	PREB	SSSC	VCOM	PRG	SST	VGI	AMANA	DRT	KSL	PRINC	STA	VIH	PRM	STGT	WACOAL	WHA	FSX	GLOBAL	GREEN	ICN	IHL	ITC	J	JMART	J	DMT	EKH	DEXON	CV	CAZ	CBG	BYD	BTG	BLAND	ASW	AMC	ALT	ADB	ACE	DECLARED																		
ADVANC	CKP	ITC	PLAT	SPALI	TTA	NDR	AMR	STANLY	APURE	SUPER	BIOTEC	TEAM	CCET	TFI	CHARAN	TKC	CHAYO	TPA	AJ	DEMCO	KGEN	PR9	SSP	UV	AKP	DIMET	KGI	PREB	SSSC	VCOM	PRG	SST	VGI	AMANA	DRT	KSL	PRINC	STA	VIH	PRM	STGT	WACOAL	WHA	FSX	GLOBAL	GREEN	ICN	IHL	ITC	J	JMART	J	DMT	EKH	DEXON	CV	CAZ	CBG	BYD	BTG	BLAND	ASW	AMC	ALT	ADB	ACE	DECLARED																							
AE	CM	ITEL	PLUS	SPC	TTB	PDG	AMR	STANLY	APURE	SUPER	BIOTEC	TEAM	CCET	TFI	CHARAN	TKC	CHAYO	TPA	AJ	DEMCO	KGEN	PR9	SSP	UV	AKP	DIMET	KGI	PREB	SSSC	VCOM	PRG	SST	VGI	AMANA	DRT	KSL	PRINC	STA	VIH	PRM	STGT	WACOAL	WHA	FSX	GLOBAL	GREEN	ICN	IHL	ITC	J	JMART	J	DMT	EKH	DEXON	CV	CAZ	CBG	BYD	BTG	BLAND	ASW	AMC	ALT	ADB	ACE	DECLARED																							
AEQMS	CNT	IVL	PM	SPGQ	TTCL	PEER	AMR	STANLY	APURE	SUPER	BIOTEC	TEAM	CCET	TFI	CHARAN	TKC	CHAYO	TPA	AJ	DEMCO	KGEN	PR9	SSP	UV	AKP	DIMET	KGI	PREB	SSSC	VCOM	PRG	SST	VGI	AMANA	DRT	KSL	PRINC	STA	VIH	PRM	STGT	WACOAL	WHA	FSX	GLOBAL	GREEN	ICN	IHL	ITC	J	JMART	J	DMT	EKH	DEXON	CV	CAZ	CBG	BYD	BTG	BLAND	ASW	AMC	ALT	ADB	ACE	DECLARED																							
AGE	COM7	JAS	POLY	SPI	TTW	PHOL	AMR	STANLY	APURE	SUPER	BIOTEC	TEAM	CCET	TFI	CHARAN	TKC	CHAYO	TPA	AJ	DEMCO	KGEN	PR9	SSP	UV	AKP	DIMET	KGI	PREB	SSSC	VCOM	PRG	SST	VGI	AMANA	DRT	KSL	PRINC	STA	VIH	PRM	STGT	WACOAL	WHA	FSX	GLOBAL	GREEN	ICN	IHL	ITC	J	JMART	J	DMT	EKH	DEXON	CV	CAZ	CBG	BYD	BTG	BLAND	ASW	AMC	ALT	ADB	ACE	DECLARED																							
AH	CPALL	JTS	PORT	SPRC	TVH	PIMO	AMR	STANLY	APURE	SUPER	BIOTEC	TEAM	CCET	TFI	CHARAN	TKC	CHAYO	TPA	AJ	DEMCO	KGEN	PR9	SSP	UV	AKP	DIMET	KGI	PREB	SSSC	VCOM	PRG	SST	VGI	AMANA	DRT	KSL	PRINC	STA	VIH	PRM	STGT	WACOAL	WHA	FSX	GLOBAL	GREEN	ICN	IHL	ITC	J	JMART	J	DMT	EKH	DEXON	CV	CAZ	CBG	BYD	BTG	BLAND	ASW	AMC	ALT	ADB	ACE	DECLARED																							
AHC	CPAXT	KBANK	PPP	SSC	TVO	PPS	AMR	STANLY	APURE	SUPER	BIOTEC	TEAM	CCET	TFI	CHARAN	TKC	CHAYO	TPA	AJ	DEMCO	KGEN	PR9	SSP	UV	AKP	DIMET	KGI	PREB	SSSC	VCOM	PRG	SST	VGI	AMANA	DRT	KSL	PRINC	STA	VIH	PRM	STGT	WACOAL	WHA	FSX	GLOBAL	GREEN	ICN	IHL	ITC	J	JMART	J	DMT	EKH	DEXON	CV	CAZ	CBG	BYD	BTG	BLAND	ASW	AMC	ALT	ADB	ACE	DECLARED																							
AIT	CPF	KCE	PR9	SSF	TWPC	PTC	AMR	STANLY	APURE	SUPER	BIOTEC	TEAM	CCET	TFI	CHARAN	TKC	CHAYO	TPA	AJ	DEMCO	KGEN	PR9	SSP	UV	AKP	DIMET	KGI	PREB	SSSC	VCOM	PRG	SST	VGI	AMANA	DRT	KSL	PRINC	STA	VIH	PRM	STGT	WACOAL	WHA	FSX	GLOBAL	GREEN	ICN	IHL	ITC	J	JMART	J	DMT	EKH	DEXON	CV	CAZ	CBG	BYD	BTG	BLAND	ASW	AMC	ALT	ADB	ACE	DECLARED																							
AJ	CPI	KEX	PRG	SSSC	UAC	SECURE	AMR	STANLY	APURE	SUPER	BIOTEC	TEAM	CCET	TFI	CHARAN	TKC	CHAYO	TPA	AJ	DEMCO	KGEN	PR9	SSP	UV	AKP	DIMET	KGI	PREB	SSSC	VCOM	PRG	SST	VGI	AMANA	DRT	KSL	PRINC	STA	VIH	PRM	STGT	WACOAL	WHA	FSX	GLOBAL	GREEN	ICN	IHL	ITC	J	JMART	J	DMT	EKH	DEXON	CV	CAZ	CBG	BYD	BTG	BLAND	ASW	AMC	ALT	ADB	ACE	DECLARED																							
AKR	CPL	KKP	PRM	STA	UBE	SELC	AMR	STANLY	APURE	SUPER	BIOTEC	TEAM	CCET	TFI	CHARAN	TKC	CHAYO	TPA	AJ	DEMCO	KGEN	PR9	SSP	UV	AKP	DIMET	KGI	PREB	SSSC	VCOM	PRG	SST	VGI	AMANA	DRT	KSL	PRINC	STA	VIH	PRM	STGT	WACOAL	WHA	FSX	GLOBAL	GREEN	ICN	IHL	ITC	J	JMART	J	DMT	EKH	DEXON	CV	CAZ	CBG	BYD	BTG	BLAND	ASW	AMC	ALT	ADB	ACE	DECLARED																							
ALLA	CPN	KSL	PRTR	STEC	UP	SENX	AMR	STANLY	APURE	SUPER	BIOTEC	TEAM	CCET	TFI	CHARAN	TKC	CHAYO	TPA	AJ	DEMCO	KGEN	PR9	SSP	UV	AKP	DIMET	KGI	PREB	SSSC	VCOM	PRG	SST	VGI	AMANA	DRT	KSL	PRINC	STA	VIH	PRM	STGT	WACOAL	WHA	FSX	GLOBAL	GREEN	ICN	IHL	ITC	J	JMART	J	DMT	EKH	DEXON	CV	CAZ	CBG	BYD	BTG	BLAND	ASW	AMC	ALT	ADB	ACE	DECLARED																							
ALT	CPW	KTG	PSH	STGT	UPF	SFT	AMR	STANLY	APURE	SUPER	BIOTEC	TEAM	CCET	TFI	CHARAN	TKC	CHAYO	TPA	AJ	DEMCO	KGEN	PR9	SSP	UV	AKP	DIMET	KGI	PREB	SSSC	VCOM	PRG	SST	VGI	AMANA	DRT	KSL	PRINC	STA	VIH	PRM	STGT	WACOAL	WHA	FSX	GLOBAL	GREEN	ICN	IHL	ITC	J	JMART	J	DMT	EKH	DEXON	CV	CAZ	CBG	BYD	BTG	BLAND	ASW	AMC	ALT	ADB	ACE	DECLARED																							
AMARIN	CRC	KTC	PSL	STI	UPOIC	SGF	AMR	STANLY	APURE	SUPER	BIOTEC	TEAM	CCET	TFI	CHARAN	TKC	CHAYO	TPA	AJ	DEMCO	KGEN	PR9	SSP	UV	AKP	DIMET	KGI	PREB	SSSC	VCOM	PRG	SST	VGI	AMANA	DRT	KSL	PRINC	STA	VIH	PRM	STGT	WACOAL	WHA	FSX	GLOBAL	GREEN	ICN	IHL	ITC	J	JMART	J	DMT	EKH	DEXON	CV	CAZ	CBG	BYD	BTG	BLAND	ASW	AMC	ALT	ADB	ACE	DECLARED																							
AMATA	CSC	LALIN	PT	SUC	UV	SICT	AMR	STANLY	APURE	SUPER	BIOTEC	TEAM	CCET	TFI	CHARAN	TKC	CHAYO	TPA	AJ	DEMCO	KGEN	PR9	SSP	UV	AKP	DIMET	KGI	PREB	SSSC	VCOM	PRG	SST	VGI	AMANA	DRT	KSL	PRINC	STA	VIH	PRM	STGT	WACOAL	WHA	FSX	GLOBAL	GREEN	ICN	IHL	ITC	J	JMART	J	DMT	EKH	DEXON	CV	CAZ	CBG	BYD	BTG	BLAND	ASW	AMC	ALT	ADB	ACE	DECLARED																							
AMATAV	CSS	LANNA	PTT	SUN	VGI	SR	AMR	STANLY	APURE	SUPER	BIOTEC	TEAM	CCET	TFI	CHARAN	TKC	CHAYO	TPA	AJ	DEMCO	KGEN	PR9	SSP	UV	AKP	DIMET	KGI	PREB	SSSC	VCOM	PRG	SST	VGI	AMANA	DRT	KSL	PRINC	STA	VIH	PRM	STGT	WACOAL	WHA	FSX	GLOBAL	GREEN	ICN	IHL	ITC	J	JMART	J	DMT	EKH	DEXON	CV	CAZ	CBG	BYD	BTG	BLAND	ASW	AMC	ALT	ADB	ACE	DECLARED																							
ANAN	CV	LH	PTTEP	SUSCO	VIBHA	STC	AMR	STANLY	APURE	SUPER	BIOTEC	TEAM	CCET	TFI	CHARAN	TKC	CHAYO	TPA	AJ	DEMCO	KGEN	PR9	SSP	UV	AKP	DIMET	KGI	PREB	SSSC	VCOM	PRG	SST	VGI	AMANA	DRT	KSL	PRINC	STA	VIH	PRM	STGT	WACOAL	WHA	FSX	GLOBAL	GREEN	ICN	IHL	ITC	J	JMART	J	DMT	EKH	DEXON	CV	CAZ	CBG	BYD	BTG	BLAND	ASW	AMC	ALT	ADB	ACE	DECLARED																							
ADOT	DDC	LHFG	PTTGC	SUTHA	VIH	TACC	AMR	STANLY	APURE	SUPER	BIOTEC	TEAM	CCET	TFI	CHARAN	TKC	CHAYO	TPA	AJ	DEMCO	KGEN	PR9	SSP	UV	AKP	DIMET	KGI	PREB	SSSC	VCOM	PRG	SST	VGI	AMANA	DRT	KSL	PRINC	STA	VIH	PRM	STGT	WACOAL	WHA	FSX	GLOBAL	GREEN	ICN	IHL	ITC	J	JMART	J	DMT	EKH	DEXON	CV	CAZ	CBG	BYD	BTG	BLAND	ASW	AMC	ALT	ADB	ACE	DECLARED																							
AP	DDD	LOXLEY	Q-CON	SVII	WACOAL	THANA	AMR	STANLY	APURE	SUPER	BIOTEC	TEAM	CCET	TFI	CHARAN	TKC	CHAYO	TPA	AJ	DEMCO	KGEN	PR9	SSP	UV	AKP	DIMET	KGI	PREB	SSSC	VCOM	PRG	SST	VGI	AMANA	DRT	KSL	PRINC	STA	VIH	PRM	STGT	WACOAL	WHA	FSX	GLOBAL	GREEN	ICN	IHL	ITC	J	JMART	J	DMT	EKH	DEXON	CV	CAZ	CBG	BYD	BTG	BLAND	ASW	AMC	ALT	ADB	ACE	DECLARED																							
APCO	DELTA	LPN	QH	SVT	WGE	TM	AMR	STANLY	APURE	SUPER	BIOTEC	TEAM	CCET	TFI	CHARAN	TKC	CHAYO	TPA	AJ	DEMCO	KGEN	PR9	SSP	UV	AKP	DIMET	KGI	PREB	SSSC	VCOM	PRG	SST	VGI	AMANA	DRT	KSL	PRINC	STA	VIH	PRM	STGT	WACOAL	WHA	FSX	GLOBAL	GREEN	ICN	IHL	ITC	J	JMART	J	DMT	EKH	DEXON	CV	CAZ	CBG	BYD	BTG	BLAND	ASW	AMC	ALT	ADB	ACE	DECLARED																							
APCS	DEMCO	LRH	QTC	SYMC	WHA	TMC	AMR	STANLY	APURE	SUPER	BIOTEC	TEAM	CCET	TFI	CHARAN	TKC	CHAYO	TPA	AJ	DEMCO	KGEN	PR9	SSP	UV	AKP	DIMET	KGI	PREB	SSSC	VCOM	PRG	SST	VGI	AMANA	DRT	KSL	PRINC	STA	VIH	PRM	STGT	WACOAL	WHA	FSX	GLOBAL	GREEN	ICN	IHL	ITC	J	JMART	J	DMT	EKH	DEXON	CV	CAZ	CBG	BYD	BTG	BLAND	ASW	AMC	ALT	ADB	ACE	DECLARED																							
ASEFA	DMT	LST	RATCH	SYNEX	WHAUP	TNDT	AMR	STANLY	APURE	SUPER	BIOTEC	TEAM	CCET	TFI	CHARAN	TKC	CHAYO	TPA	AJ	DEMCO	KGEN	PR9	SSP	UV	AKP	DIMET	KGI	PREB	SSSC	VCOM	PRG	SST	VGI	AMANA	DRT	KSL	PRINC	STA	VIH	PRM	STGT	WACOAL	WHA	FSX	GLOBAL	GREEN	ICN	IHL	ITC	J	JMART	J	DMT	EKH	DEXON	CV	CAZ	CBG	BYD	BTG	BLAND	ASW	AMC	ALT	ADB	ACE	DECLARED																							
ASK	DOHOME	M	RB	SYNTEC	WICE	TPS	AMR	STANLY	APURE	SUPER	BIOTEC	TEAM	CCET	TFI	CHARAN	TKC	CHAYO	TPA	AJ	DEMCO	KGEN	PR9	SSP	UV	AKP	DIMET	KGI	PREB	SSSC	VCOM	PRG	SST	VGI	AMANA	DRT	KSL	PRINC	STA	VIH	PRM	STGT	WACOAL	WHA	FSX	GLOBAL	GREEN	ICN	IHL	ITC	J	JMART	J	DMT	EKH	DEXON	CV	CAZ	CBG	BYD	BTG	BLAND	ASW	AMC	ALT	ADB	ACE	DECLARED																							
ASP	DRT	MAJOR	RPH	TAE	XPG	TOR	AMR	STANLY	APURE	SUPER	BIOTEC	TEAM	CCET	TFI	CHARAN	TKC	CHAYO	TPA	AJ	DEMCO	KGEN	PR9	SSP	UV	AKP	DIMET	KGI	PREB	SSSC	VCOM	PRG	SST	VGI	AMANA	DRT	KSL	PRINC	STA	VIH	PRM	STGT	WACOAL	WHA	FSX	GLOBAL	GREEN	ICN	IHL	ITC	J	JMART	J	DMT	EKH	DEXON	CV	CAZ	CBG	BYD	BTG	BLAND	ASW	AMC	ALT	ADB	ACE	DECLARED																							
ASW	DUSIT	MALEE	RS	TCAP	ZEN	TRT	AMR	STANLY	APURE	SUPER	BIOTEC	TEAM	CCET	TFI	CHARAN	TKC	CHAYO	TPA	AJ	DEMCO	KGEN	PR9	SSP	UV	AKP	DIMET	KGI	PREB	SSSC	VCOM	PRG	SST	VGI	AMANA	DRT	KSL	PRINC	STA	VIH	PRM	STGT	WACOAL	WHA	FSX	GLOBAL	GREEN	ICN	IHL	ITC	J	J																																							